



# SPLUNK IS A JOURNEY. WE KNOW THE WAY.

splunk>partner+

ELITE

ACCREDITED PROFESSIONAL  
SERVICES PROVIDER



## The Atlas Platform consists of:



### Reference Designs

Next-generation reference architectures in Atlas can reduce indexer counts by 75% for on-prem environments, while providing a 10x performance increase.



### Applications & Utilities

The Atlas Platform's collection of applications & utilities speed up powerful searches, help you discover data sources, license utilization, missing forwarders and more, meaning your data and license usage is never in the dark.



### On-demand Support

Expertise on Demand, Atlas' support component, is the fastest, easiest way to solve pressing challenges and extend the Splunk capabilities of your team. Get on-demand access to our team of 50+ Splunk-certified professionals.

## The #1 platform for finding your way to business and operational success with Splunk.

Splunk is amazing — business and operational insights, IT Ops, security, compliance — there's not a better platform available. But it's also complex. And while achieving success is sometimes viewed as a "destination," it's really a journey. Getting Splunk set up to deliver, operationally and architecturally sound, and adopted throughout the organization are challenges that have left businesses just like yours wandering in the wilderness for far too long.

## Splunk is powerful. Atlas makes it easy.

So how do you harness the power of Splunk without falling victim to the complexity? You need a guide — Atlas is a subscription service that gives you a clear path forward on your Splunk journey with revolutionary datacenter architectures, personal guidance and on-demand support, and a collection of applications and utilities that provide powerful insights, instantly. The platform brings new, innovative solutions to the Splunk community and enables scalable, consistent results.

This is more than a technical toolbox. For many users, the benefits of **the Atlas platform could cut costs associated with operating Splunk in half.** If you're consuming your Splunk license too quickly, or search contention is wearing you down in your journey, Atlas is the "data GPS" you've been waiting for, and makes next steps clear and effective.



## What applications & utilities are included with Atlas?



### Search Library

A curated collection of powerful SPL search queries, custom-tailored for a wide variety of use cases.



### Forwarder Awareness

Take the guesswork out of your forwarder health and gain visibility allowing easy and early detection of outages, unusual behavior, or issues.



### Data Management

Eliminate data sprawl with this utility designed to organize and enrich data inputs, monitor licensing, and track data requests from users.



### Scheduling Assistant

Optimize your scheduled jobs to enhance performance in your environment and prevent data lag.

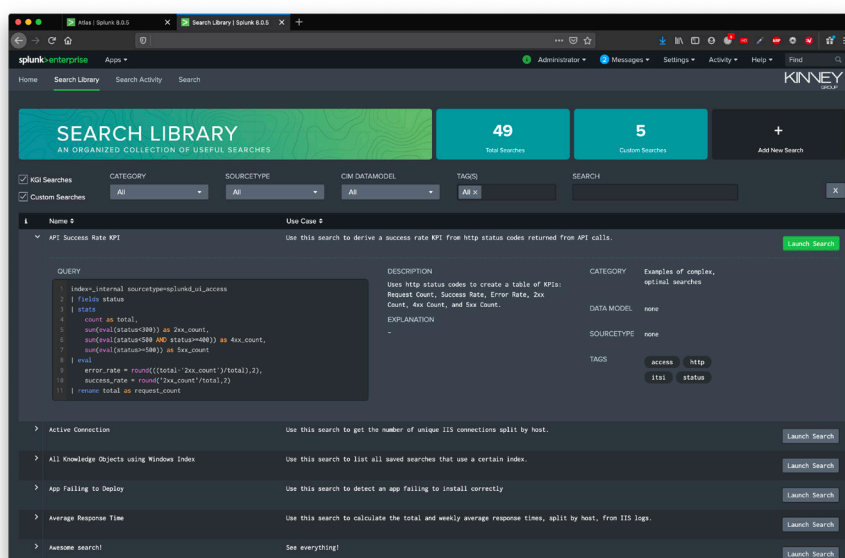


### Beta: Enterprise Security Helper

Intelligent guidance for getting Enterprise Security up and running, data prioritization, and deployment scoring for optimizing your investment.

## Achieve more with innovative applications and utilities in an interface that's clean, easy to navigate, and, dare we say, fun to use

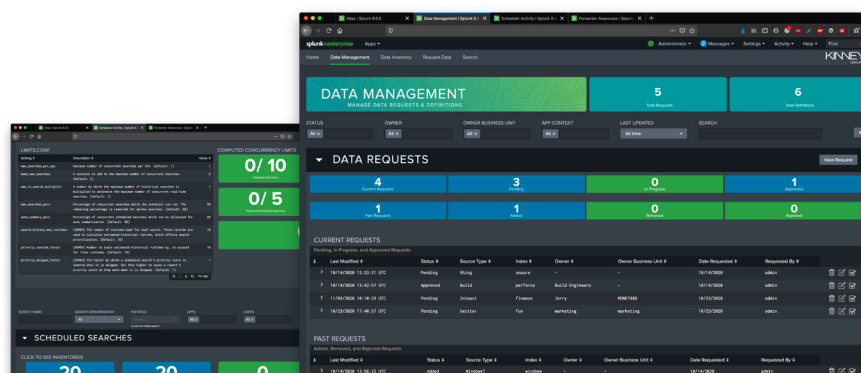
The Atlas Platform interface is your hub of activity within the platform, including a collection of powerful applications and utilities that simplifies daily tasks within Splunk. Core capabilities provide clear visibility into data sources, a growing library of powerful searches that eliminates the need to understand Splunk's Search Processing Language (SPL) for non-admin users, Splunk Forwarder awareness, a scheduling assistant that allows users to optimize scheduled searches and jobs, a setup assistant that makes getting started with Splunk Enterprise Security (ES) a breeze, and more... The end result is **less time wrestling with the platform, and more time doing the things that drive business forward.**



With the Atlas Search Library, even users who aren't versed in Splunk's SPL search language can conduct complex searches with the press of a button.

## Incredibly powerful applications that deliver value for a variety of use cases

The Atlas Platform currently includes several premium applications that make life easier in Splunk today, and we're just getting started. A subscription to Atlas means you'll automatically receive new apps as they're released, and have the ability to preview apps in development through the Kinney Group Beta Program.



## What can Expertise on Demand do for me?

### Optimization assessment and assistance

Our team can identify and resolve data-quality and platform-related issues to help create and maintain a stable Splunk environment

### Dashboarding and data visualization

Create, modify, or troubleshoot a dashboard that provides the insights you need — fast

### Searching and reporting

Create, modify, or troubleshoot powerful searches, search macros, field extractions, and data onboarding

### Improve integration with your technology stack

Our team can improve your utilization of third-party technologies such as AWS or SNOW to increase performance and extract value

### ...and that's just the tip of the iceberg!

Expertise on Demand is your time, designed to be used how you need it. Need training? A quick dashboard or search? If you can think it up, EOD can help support it! Schedule a Discovery Session to find out specifically what EOD can do for your organization.



## Directions are good. A personal guide is even better. That's why we include Expertise on Demand with every Atlas subscription.

Expertise on Demand (EOD) provides access to Splunk experts via a set amount of hours each month (consumable in increments as small as 15 minutes). EOD provides customers with immediate access to expert assistance with (but not limited to):

- Splunk dashboards, reports, data models, and custom use cases
- Best practices for design, implementation, and operation of Splunk
- Knowledge transfer of Splunk platform expertise to aid your engineering teams for troubleshooting, advanced Q&A, and other best practices

It's the support resource you need, whenever you need it most. Backed by the best team of Splunk-certified professionals available.

## Custom training, exclusive content, and events tailored to your organization's needs

Expertise on Demand has helped organizations struggling with Splunk adoption and buy-in to transform their utilization through a variety of training and "lunch and learn" style events, custom-tailored to their unique use cases. Covering topics such as dashboarding, search, Splunk features, indexing, and best practices in a variety of areas, our team will help you develop and execute an education and engagement program to get Splunk widely-utilized and delivering on the business outcomes you need.

## About Kinney Group

Kinney Group has one of the deepest benches of Splunk expertise in North America. Since 2013, our team has provided a comprehensive Splunk customer experience across multiple disciplines including Splunk Enterprise, Splunk Enterprise Security (ES), IT Services Intelligence (ITSI) and custom use cases in the areas of compliance, IoT, and machine learning. Kinney Group highlights include:

- Splunk Elite Authorized Service Provider
- Splunk Award-winning Services Partner
- Experience with 600+ projects delivered nationwide and overseas
- Application development expertise for the Splunk platform
- More than 50+ Splunk-certified professionals on staff

## Get started with Atlas

Ready to find your way with Splunk? Reach out to your Kinney Group representative to schedule a 20-minute discovery session and demonstration.



(317) 721-0500



[kinneygroup.com/atlas](https://kinneygroup.com/atlas)